

# DARTMOUTH JOURNAL SERVICES



## Technology Development

Pilgrim 5, Suite 5  
5 Pilgrim Park Road  
Waterbury, VT 05676

Phone: 802.244.1457  
Fax: 802.244.1462  
Email: [preflight@dartmouthjournals.com](mailto:preflight@dartmouthjournals.com)

## Configuring a Workstation for PS/PDF Generation

DJS\_WorkstationConfig2.0: version 2.0; May 9, 2007; Web release



version 0.1	November 21, 2003	Draft, KL
version 0.2	November 25, 2003	Draft; after Preflight comments, AB
version 1.0	November 25, 2003	Initial Release, KL
version 1.1	November 26, 2003	Revision; after Imaging comments, KM
version 1.2	December 11, 2003	Revision, KL
version 1.3	March 1, 2004	Revision; exp. intro, KL
version 1.4	March 24, 2004	Revision; OSX upd., KL
version 1.5	March 26, 2004	Revision; after Preflight comments, AB
version 1.6	April 26, 2004	Revision; after IT comments, SW
version 2.0b	April 3, 2007	Pre-web release, KL
version 2.0	May 9, 2007	Web release; after TechDev comments, SW

### Contents

1. Introduction	1
2. Checklist and Sequence of Configuration	2
3. File Placement	2
3.1. Macintosh OSX	2
3.1.1. Creo Distiller Assistant	2
3.1.2. Adobe Distiller Joboptions	2
3.1.3. Adobe Distiller Fonts Folder	2
3.1.4. Prinergy Refiner PPD	2
3.2. Macintosh OS 9.x	2
3.2.1. Creo Distiller Assistant	2
3.2.2. Creo Color TIFF XT	2
3.2.3. Adobe Distiller Joboptions	3
3.2.4. Adobe Distiller Fonts Folder	3
3.2.5. Prinergy Refiner PPD	3
3.3. Windows OS 98/ME/2000/XP	3
3.3.1. Creo Distiller Assistant	3
3.3.2. Creo Color TIFF XT	3
3.3.3. Adobe Distiller Joboptions	3
3.3.4. Adobe Distiller Fonts	3
3.3.5. Prinergy Refiner PPD	3
4. Installing a Windows Virtual PostScript Printer Using the Adobe Universal Printer Driver	4
4.1. Configuring the PostScript Printer	7
4.1.1. Windows 2000/XP	7
4.1.2. Windows 98/ME	10
5. Creating a Macintosh OSX PostScript Printer	13
6. Summary	14
7. Implementation Date	14
8. Feedback	14

### 1. Introduction

This document is intended to assist with configuration of a Macintosh (OS 9.x, OSX) or PC workstation used for generating PostScript and PDF files.

The process of writing PostScript files and manually distilling-to-PDF is a method of PDF creation which works for all supported page-layout applications. An alternate method gaining in popularity is directly exporting-to-PDF. However, direct PDF exports are only recommended when using Adobe InDesign [2.x-4.x (CS2)] and QuarkXpress 6.x-7.x. Further details can be found in the *Adobe InDesign* and *QuarkXpress PDF Creation Guides*.

Use the PDF creation method with which you are more comfortable. Excellent results can be achieved either way.

## 2. Checklist and Sequence of Configuration

The suggested sequence for complete setup is:

- Place all files and folders according to operating system and applications used (section 3).
- If using a version of Microsoft Windows, download the newest Adobe Universal Printer Driver (winsteng.exe) from the support section of Adobe's website (<http://www.adobe.com/support/downloads/detail.jsp?ftplD=1500>).
- Windows only: Install new virtual Postscript printer (section 4).
- If using Mac OS 9.x, download the newest AdobePS PostScript Printer Driver from the support section of Adobe's website (<http://www.adobe.com/support/downloads/detail.jsp?ftplD=1494>). Install driver per Adobe's instructions.
- If using Mac OSX and using Adobe Distiller to produce PDFs, create a new PostScript Printer (section 5).
- Configure Adobe Acrobat Distiller joboptions according to the *Adobe Distiller Guide*.
- Add a Distiller Fonts Folder (sections 3.1.2., 3.2.4, 3.3.4.) to the *Font Locations* menu of Adobe Distiller. This is outlined in the *Adobe Distiller Guide*.
- Set Printer Style or PDF Export criteria according to the *InDesign PDF Creation Guide* or *QuarkXpress PDF Creation Guide* (both separate documents).

## 3. File Placement

The first step for workstation configuration is correct placement of files. Figure 1 shows a typical compilation of files.

### 3.1. Macintosh OSX



#### 3.1.1. Creo Distiller Assistant

File: Creo Distiller Assistant

Placement: Users/Shared/Adobe PDF x.x/Startup/

Purpose: This file adds extra functionality to Adobe's Acrobat Distiller program. It makes use of Postscript Level 3 features such as Idiom Recognition, Smooth Shades, and DeviceN Colorspace. Further technical information is available on request.

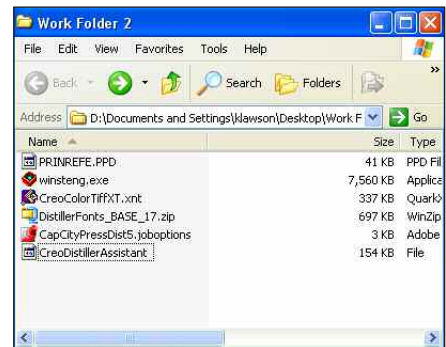


fig. 1



#### 3.1.2. Adobe Distiller Joboptions

File: \*.joboptions

Placement: Users/Shared/Adobe PDF x.x/Settings/

Purpose: This file will allow selection of DJS-specific Joboptions in the primary Distiller window.



#### 3.1.3. Adobe Distiller Fonts Folder

Folder: Mac\_Distiller\_Fonts

Placement: Anywhere except an actual OSX Fonts Folder.

Purpose: Distiller frequently requires access to these fonts. If not available, PDF generation may abort when using our recommended Distiller Joboptions.



#### 3.1.4. Prinerger Refiner PPD

File: Prinerger Refiner

Placement: Library/Printers/PPDs/Contents/Resources/en.lproj/

Purpose: This is a device-independent PPD similar to the Acrobat PPD. Either this or the Acrobat PPD can be used.

### 3.2. Macintosh OS 9.x



#### 3.2.1. Creo Distiller Assistant

File: Creo Distiller Assistant

Placement: Adobe/Acrobat/Distiller/Startup/

Purpose: This file adds extra functionality to Adobe's Acrobat Distiller program. It makes use of Postscript Level 3 features such as Idiom Recognition, Smooth Shades, and DeviceN Colorspace. Further technical information is available on request.



#### 3.2.2. Creo Color TIFF XT

File: Creo Color TIFF XT

Placement: QuarkXpress/XTension/

Purpose: Allows preservation of spot colors in composite PDF when a grayscale TIFF has been colorized in QuarkXpress 4.x or 5.x.



### 3.2.3. Adobe Distiller Joboptions

File: \*.joboptions

Placement: Acrobat/Distiller/Settings/

Purpose: This file will allow selection of DJS-specific Joboptions in the primary Distiller window.



### 3.2.4. Adobe Distiller Fonts Folder

Folder: Mac\_Distiller\_Fonts

Placement: Anywhere except the System Folder.

Purpose: Distiller frequently requires access to these fonts. If not available, PDF generation may abort when using our recommended Distiller Joboptions.



### 3.2.5. Prinergy Refiner PPD

File: Prinergy Refiner

Placement: System Folder/Extensions/Printer Descriptions/

Purpose: This is a device-independent PPD similar to the Acrobat PPD. Either this or the Acrobat PPD can be used.

## 3.3. Windows OS 98/ME/2000/XP



### 3.3.1. Creo Distiller Assistant

File: CreoDistillerAssistant

Placement:

Acrobat 6.x, 7.x - C:\Documents and Settings\All Users\Documents\Adobe PDF\Startup\

Acrobat 4.x, 5.x - C:\Program Files\Adobe\Acrobat\Distillr\Startup\

Purpose: This file adds extra functionality to Adobe's Acrobat Distiller program. It makes use of Postscript Level 3 features such as Idiom Recognition, Smooth Shades, and DeviceN Colorspace. Further technical information is available on request.



### 3.3.2. Creo Color TIFF XT

File: CreoColorTiffXT.xnt

Placement: QuarkXpress\XTension\

Purpose: Allows preservation of spot colors in composite PDF when a grayscale TIFF has been colorized in QuarkXpress 4.x or 5.x.



### 3.3.3. Adobe Distiller Joboptions

File: \*.joboptions

Placement:

Acrobat 6.x, 7.x - C:\Documents and Settings\All Users\Documents\Adobe PDF\Settings\

Acrobat 4.x, 5.x - C:\Program Files\Acrobat\Distillr\Settings\

Purpose: This file will allow selection of DJS-specific Joboptions in the primary Distiller window.



### 3.3.4. Adobe Distiller Fonts Folder

Folder: PC\_Distiller\_Fonts

Placement: Anywhere except System Folder.

Purpose: Distiller frequently requires access to these fonts. If not available, PDF generation may abort when using our recommended Distiller Joboptions.



### 3.3.5. Prinergy Refiner PPD

File: prinrefe.ppd

Placement:

Windows 98, ME - C:\Windows\system\

Windows 2000, XP - C:\Windows\system32\spool\drivers\w32x86\

Purpose: Device-independent PPD similar to Acrobat PPD. Either this or the Acrobat PPD can be used.

Note: PC versions of Adobe Pagemaker require additional placement of the Prinergy Refiner PPD in the directory below for availability in Pagemaker's PPD drop-down menu:  
C:\Program Files\Adobe\Pagemaker x.x\RSRC\USENGLISH\ppd4\



#### 4. Installing a Windows Virtual PostScript Printer Using the Adobe Universal Printer Driver

An important step to make certain PostScript files will be written properly is to create a specific printer using the Adobe Universal Printer Driver (<http://www.adobe.com/support/downloads/detail.jsp?ftpID=1500>). It can be found in the download area of Adobe's website. The PPD file should be correctly placed before continuing. Double-click the *Winsteng.exe* file and proceed using the following screenshot tutorial as a guide. The process is slightly different for Windows 98/ME and Windows 2000/XP.

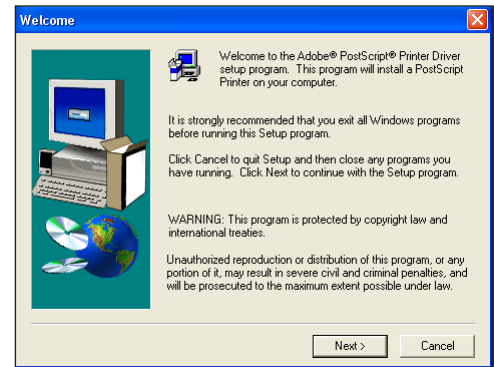


fig. 2

#### Welcome Window (fig. 2)

- Select *Next* button

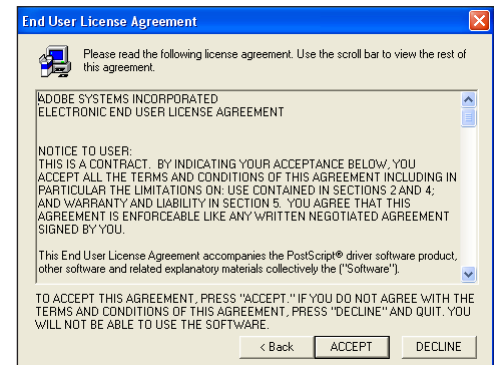


fig. 3

#### End User License Agreement Window (fig. 3)

- Select *Accept* button

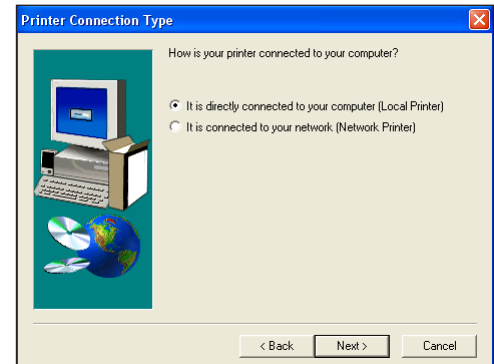


fig. 4

#### Printer Connection Type Window (fig. 4)

- Select *It is directly connected to your computer (Local Printer)*
- Select *Next* button

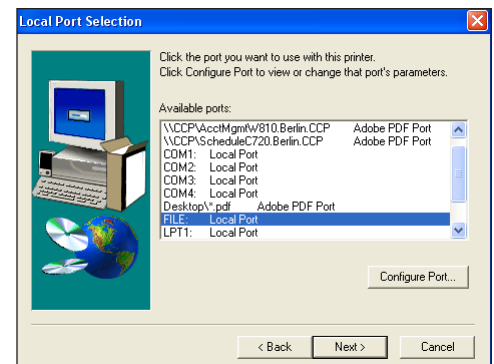


fig. 5

#### Local Port Selection Window (fig. 5)

- Highlight *FILE: Local Port*
- Select *Next* button

### Select Printer Model Window (fig. 6)

- Select *Browse* button

### Browse for Printer Window (fig. 6)

- Navigate to  
`C:\WINDOWS\system32\spool\drivers\w32x86`  
if using Windows 2000/XP, or  
`C:\WINDOWS\system\` if using Windows 98/ME.  
Highlight *Prinerigy Refiner* (or *Adobe PDF*).

- Select *OK* button

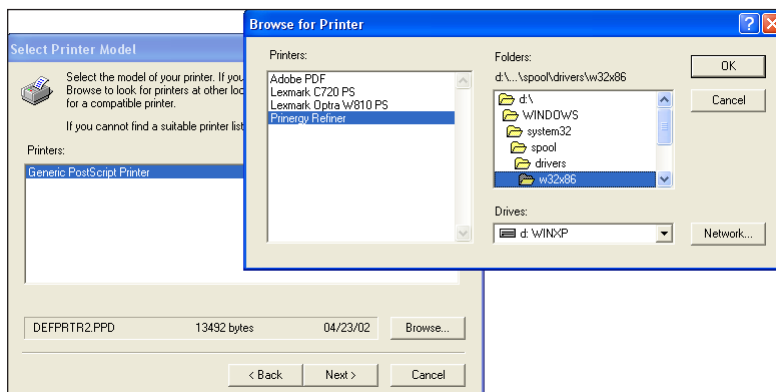


fig. 6

### Select Printer Model Window (fig. 7)

- Highlight *Prinerigy Refiner* (or *Adobe PDF*)

- Select *Next* button

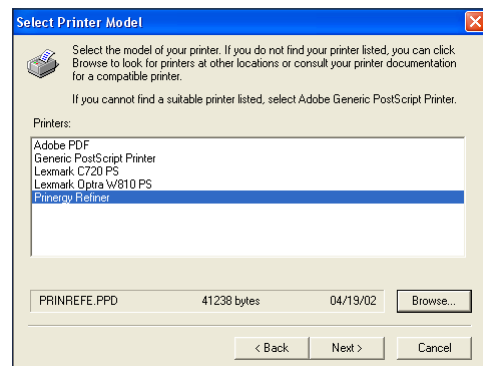


fig. 7

### Sharing Window (fig. 8)

- Select *Not Shared*
- Select *Next* button

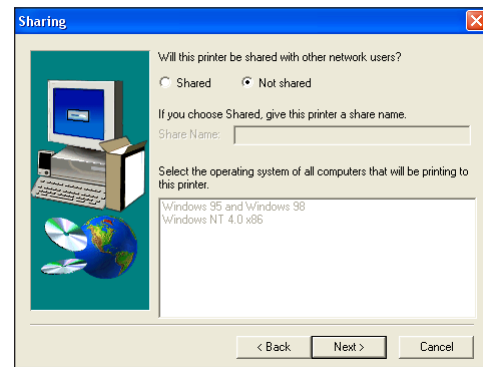


fig. 8

### Printer Information Window (fig. 9)

If using the Acrobat PPD, type *Adobe PDF\_DJS* as the Printer Name. If using *Prinerigy Refiner*, use default name shown.

- Select *No* for each question
- Select *Next* button

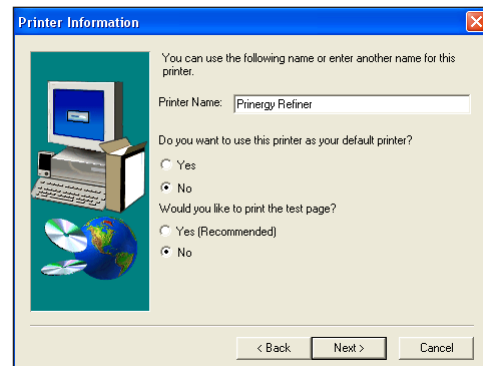


fig. 9

### Setup Information Window (fig. 10)

- Select *Install* button

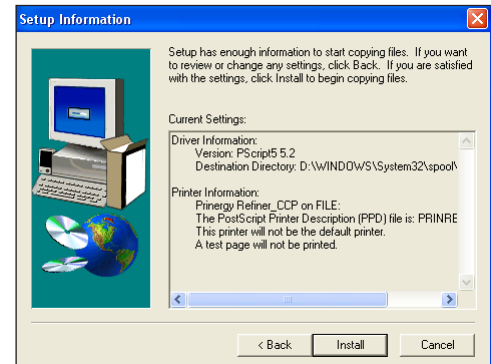


fig. 10

### Printer Configuration Window (fig. 11)

- Select *No* for configuring printer now
- Select *Next* button

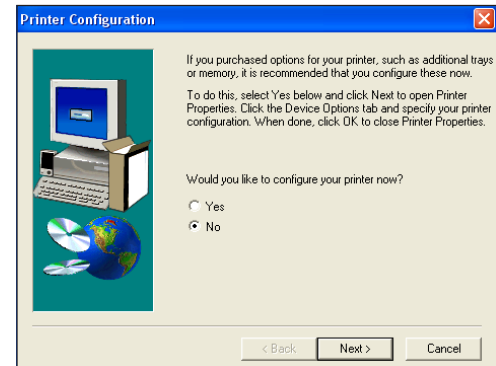


fig. 11

### Setup Complete Window (fig. 12)

- Deselect *Readme* box
- Select *Finish* button

The PostScript printer has been created and should now be configured according to the following section.

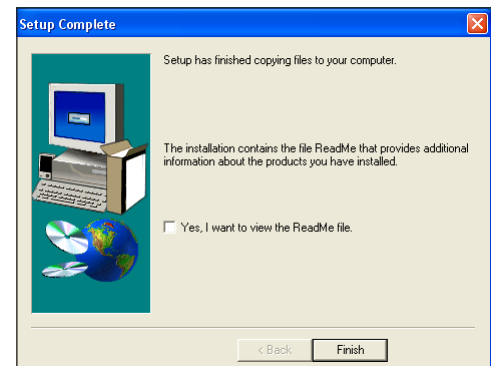


fig. 12

#### 4.1. Configuring the Postscript Printer

This section illustrates how to modify a virtual PostScript printer. There are two subsections: one each for Windows 2000/XP and Windows 98/ME. The most important settings are defined in text. Please refer to screenshots to verify other choices are correctly selected.

##### 4.1.1. Windows 2000/XP

###### Start Menu (fig. 13)

Select *Settings/Printers and Faxes*

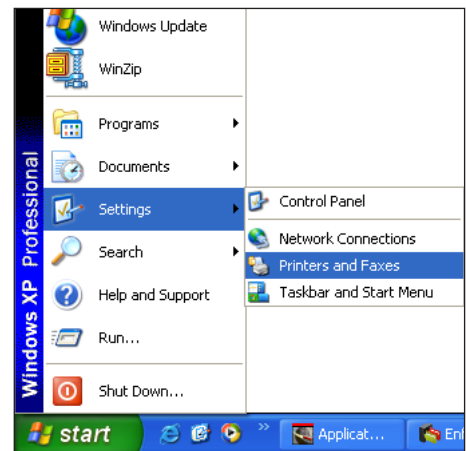


fig. 13

###### Printers and Faxes Window (fig. 14)

- Right-click the newly-created Postscript printer and select *Printing Preferences*

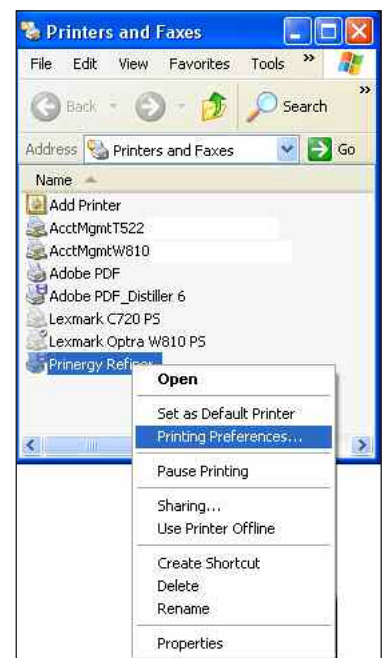


fig. 14

###### Printing Preferences Window (fig. 15)

- Select *Paper/Quality* tab
- Confirm *Color* is selected
- Select *Advanced* button

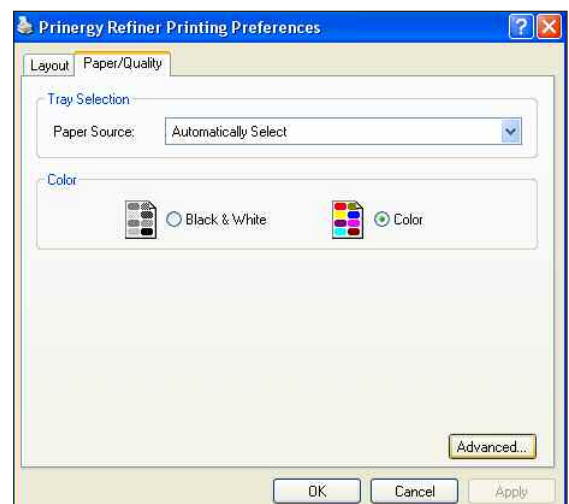


fig. 15

**Advanced Options Window (fig. 16)**

- Select TrueType Font: *Download as Softfont*

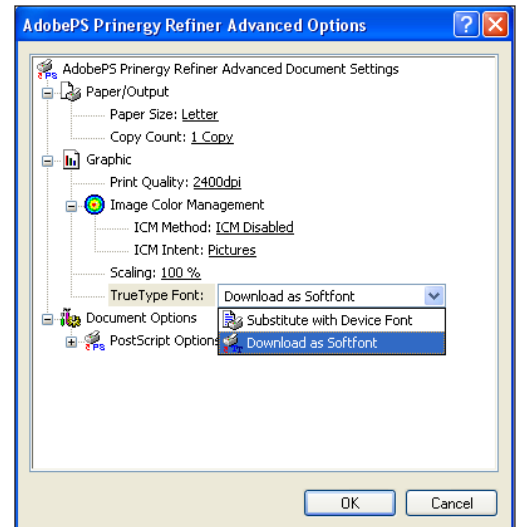


fig. 16

**Advanced Options Windows (fig. 17)**

- Select PostScript Option: *Optimize for Portability*

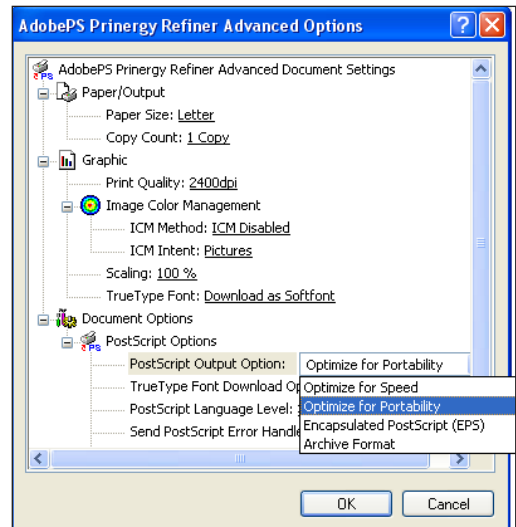


fig. 17

**Advanced Options Window (fig. 18)**

- Select TrueType Font Download Option: *Native TrueType*

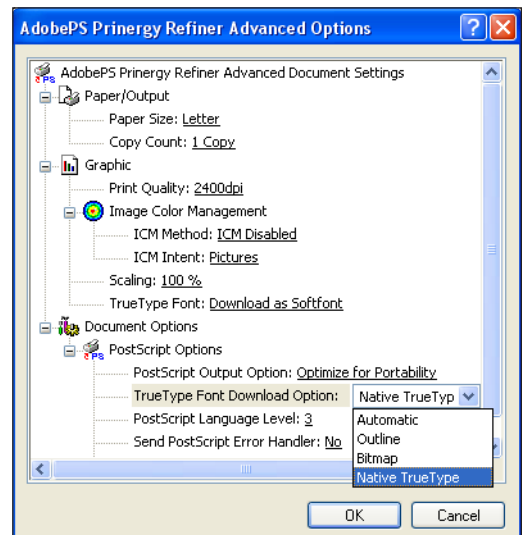


fig. 18



### Advanced Options Window (fig. 19)

- Select PostScript Language Level: 3
- Select OK button
- Select OK button to exit Printing Preferences window

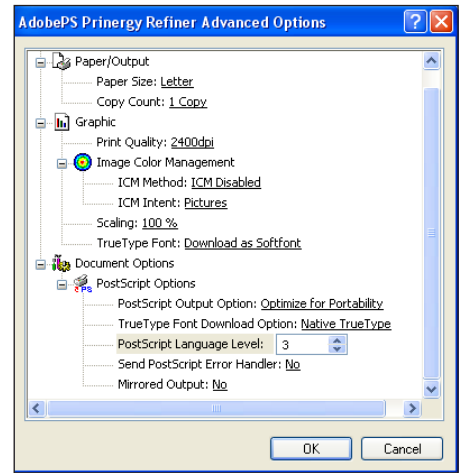


fig. 19

### Printers and Faxes Window (fig. 20)

- Navigate to the Printers and Faxes window
- Right-click the newly-created Postscript printer and select *Properties*.

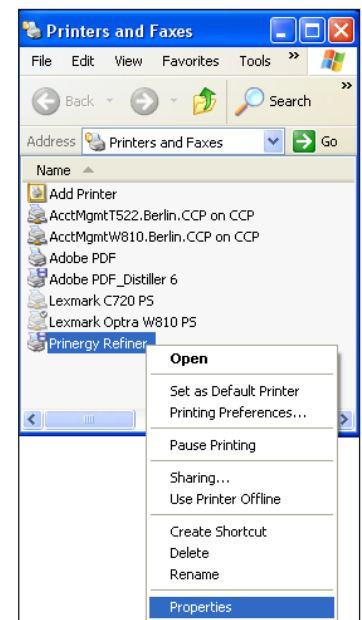


fig. 20

### Properties Window (fig. 21)

Select *Device Settings* tab

Select Output Protocol: *Binary*

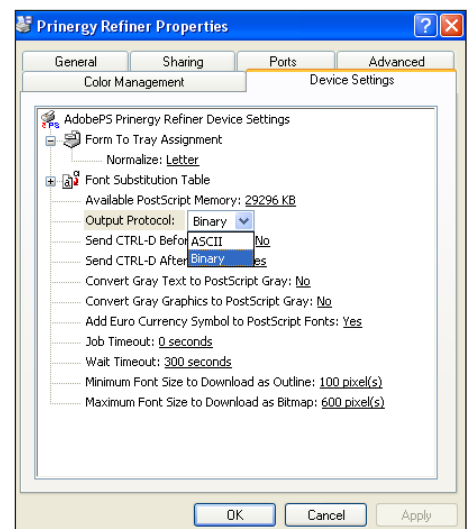


fig. 21

### Properties Window (fig. 22)

Select Add Euro Currency Symbol to PostScript Fonts: Yes

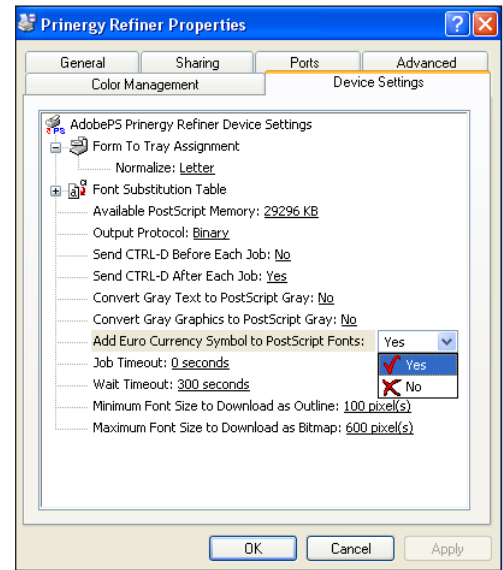


fig. 22

### Properties Window (fig. 23)

- Review the Font Substitution Table column
- Verify *Don't Substitute* is selected for every font listed. If not, select *Don't Substitute*.
- Select OK button.

PostScript printer configuration is complete.

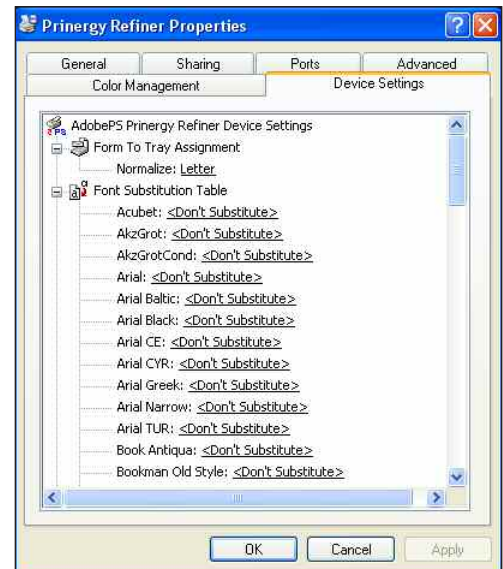


fig. 23

### 4.1.2. Windows 98/ME

#### Start Menu (fig. 24)

- Select Settings/Printers

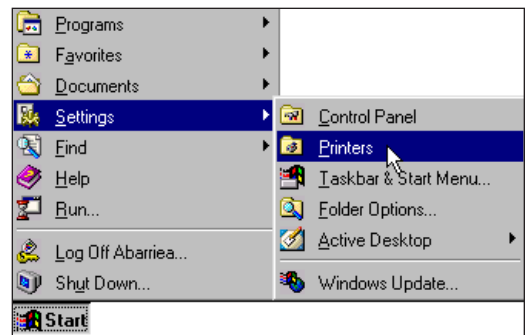


fig. 24

### Printers Window (fig. 25)

- Right-click the Postscript printer and select *Properties*

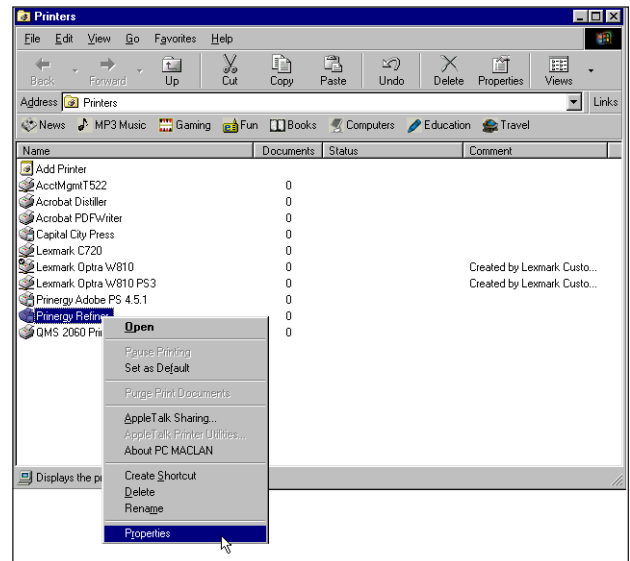


fig. 25

### Properties Window - Graphics Tab (fig. 26)

- Select *Graphics* tab
- Select Resolution: 2400dpi

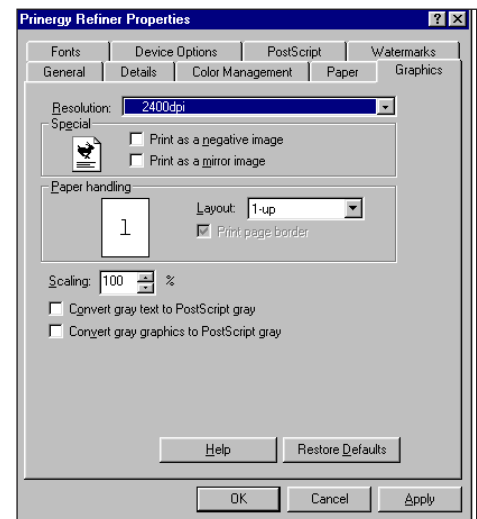


fig. 26

### Properties Window - Fonts Tab (fig. 27)

- Select *Fonts* Tab
- Verify *Substitute printer fonts for TrueType fonts when applicable* and *Do not use printer fonts* are deselected
- Select *Add Euro Currency Symbol to PostScript Fonts*
- Click the *Send Fonts As...* button

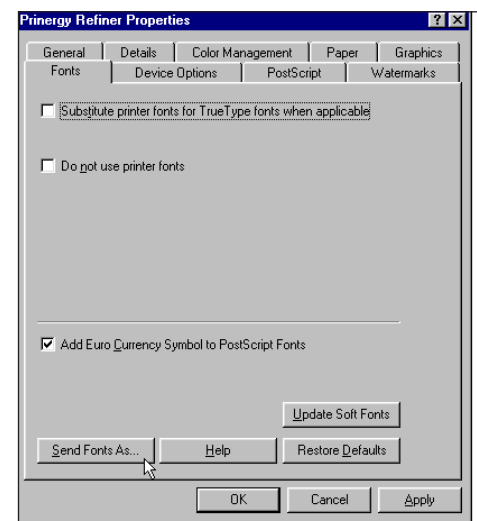


fig. 27

**Fonts Tab - Send Fonts As... Window (fig. 28)**

- Select Send TrueType fonts as: *Type 42*
- Select Send PostScript fonts as: *In Native Format*
- Select *OK* button.

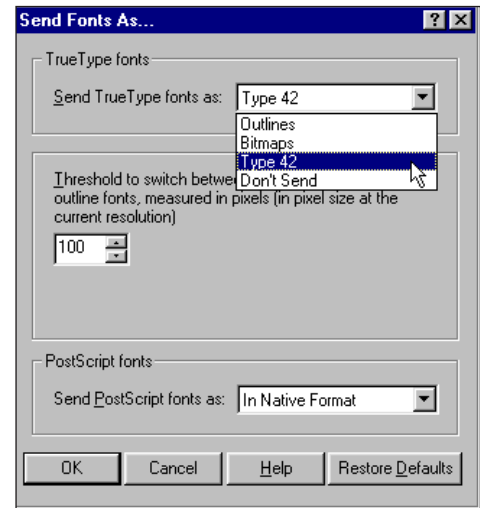


fig. 28

**Properties Window - PostScript Tab (fig. 29)**

- Select *PostScript* tab
- Select PostScript output format: *PostScript (optimize for portability - ADSC)*
- Select *Advanced* button

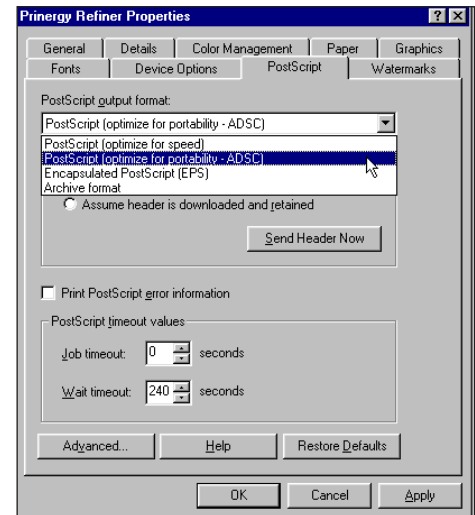


fig. 29

**PostScript Tab - Advanced PostScript Options (fig. 30)**

- Select PostScript language level: *3*
  - Select Data format: *Pure binary data*
  - Select *OK* button
  - Select *OK* button on main Properties window
- PostScript printer configuration is complete.**

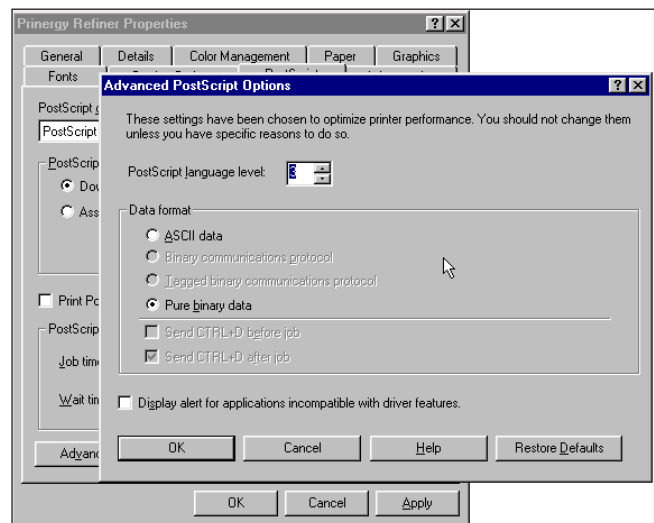


fig. 30

## 5. Creating a Macintosh OSX PostScript Printer

If you do not have a real PostScript printer installed in Mac OSX, you can add a virtual one by following these guidelines. This is recommended if writing PostScript files from QuarkXpress.

Start the Mac *Printer Setup Utility* (fig. 31).

This is located at: Applications/Utilities/

Note: This utility may be called "Print Center" on your OSX version.

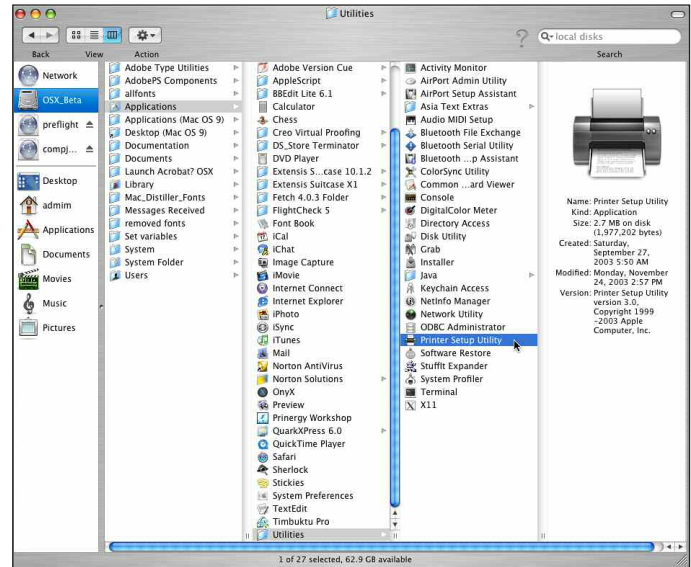


fig. 31

Select *Add* button (fig. 32)

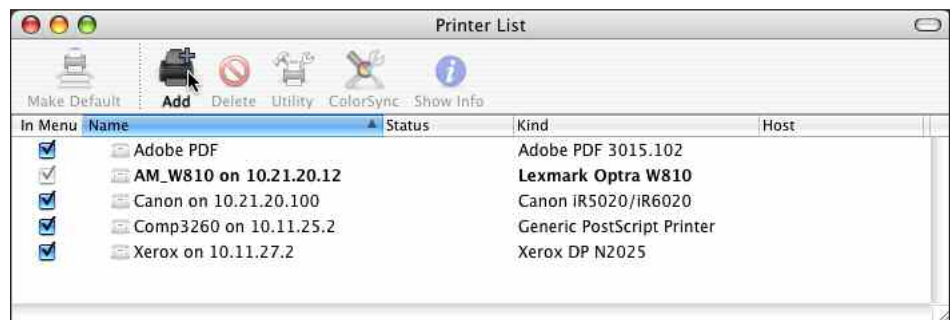


fig. 32

Select *IP Printer* (fig. 33)

Select Protocol: *Internet Printing Protocol - IPP*

Select Printer Address: *localhost*

Enter a Name, for example, *DJS\_PostScript*

Select Print Using: *Creo Products/Prinergy Refiner*

Note: Creo Products and Prinergy Refiner will be available if the Prinergy Refiner PPD was placed correctly in *Library/Printers/PPDs/Contents/Resources/en.lproj*.

Select *Add* button

**Macintosh OSX PostScript Printer creation is complete.**

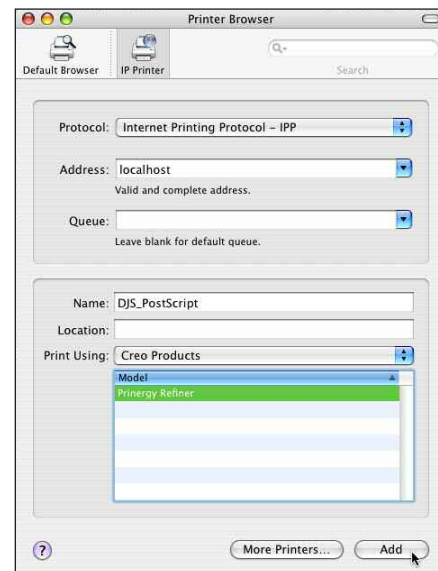


fig. 33

## **6. Summary**

Both the Prinergy Refiner and Adobe PDF PPDs are device-independent; they do not write device-specific information to PostScript files, yet allow the selection of certain high-end controls, such as custom paper sizes for oversized jobs.

## **7. Implementation Date**

Please implement these settings after May 9, 2007.

## **8. Feedback**

Dartmouth Journals will update this document as necessary to accommodate emerging technologies and software revisions. Technology Development encourages your feedback to ensure this documentation is as clear and accurate as possible. Please contact us via email at [preflight@dartmouthjournals.com](mailto:preflight@dartmouthjournals.com) with comments.